

Datalogic Scanning, Inc.
 959 Terry Street
 Eugene, Oregon 97402
 USA
 Telephone: (541) 683-5700
 Fax: (541) 345-7140

An Unpublished Work - All rights reserved. No part of the contents of this documentation or the procedures described therein may be reproduced or transmitted in any form or by any means without prior written permission of Datalogic Scanning, Inc. or its subsidiaries or affiliates ("Datalogic" or "Datalogic Scanning"). Owners of Datalogic products are hereby granted a non-exclusive, revocable license to reproduce and transmit this documentation for the purchaser's own internal business purposes. Purchaser shall not remove or alter any proprietary notices, including copyright notices, contained in this documentation and shall ensure that all notices appear on any reproductions of the documentation. Should future revisions of this manual be published, you can acquire printed versions by contacting your Datalogic representative. Electronic versions may either be downloadable from the Datalogic website (www.scanning.datalogic.com) or provided on appropriate media. If you visit our website and would like to make comments or suggestions about this or other Datalogic publications, please let us know via the "Contact Datalogic" page.

DISCLAIMER

Datalogic has taken reasonable measures to provide information in this manual that is complete and accurate, however, Datalogic reserves the right to change any specification at any time without prior notice. Datalogic is a registered trademark of Datalogic S.p.A. in many countries and the Datalogic logo is a trademark of Datalogic S.p.A. all licensed to Datalogic Scanning, Inc. All other trademarks and trade names referred to herein are property of their respective owners.

SERVICES AND SUPPORT

Datalogic provides several services as well as technical support through its website. Log on to www.scanning.datalogic.com and click on the links indicated for further information including:

- PRODUCTS**
 Search through the links to arrive at your product page where you can download specific **Manuals** and **Software & Utilities** including:
 - **Datalogic Aladdin™** a multi-platform utility program that allows device configuration using a PC. It provides RS-232 interface configuration as well as configuration barcode printing.
- SERVICE & SUPPORT**
 - **Technical Support** - Product documentation and programming guides and Technical Support Department in the world
 - **Service Programs** - Warranty Extensions and Maintenance Agreements
 - **Repair Services** - Flat Rate Repairs and Return Material Authorization (RMA) Repairs.
 - **Downloads** – Manuals & Documentation, Data Sheets, Product Catalogues, etc.
- CONTACT US**
 Information Request Form and Sales & Service Network

WARRANTY

Datalogic warrants this product against defects in workmanship and materials, for a period of 3 years from the date of shipment, provided that the product is operated under normal and proper conditions.

Datalogic has the faculty to repair or replace the product; these provisions do not prolong the original warranty term.

The warranty does not apply to any product that has been subject to misuse, accidental damage, unauthorized repair or tampering.

Datalogic Scanning, Inc.
 959 Terry Street
 Eugene, OR 97402
 USA



dichiara che
 declares that the
 déclare que le
 bescheinigt, daß das Gerät
 declare que el

PowerScan D8xxx

e tutti i suoi modelli
 and all its models
 et tous ses modèles
 und seine Modelle
 y todos sus modelos

sono conformi alle Direttive del Consiglio Europeo sottoelencate:
 are in conformity with the requirements of the European Council Directives listed below:
 sont conformes aux spécifications des Directives de l'Union Européenne ci-dessous:
 den nachstehenden angeführten Direktiven des Europäischen Rats:
 cumple con los requisitos de las Directivas del Consejo Europeo, según la lista siguiente:

89/336/EEC EMC Directive	e and et und y	92/31/EEC, 93/68/EEC	emendamenti successivi further amendments ses successifs amendements späteren Abänderungen sucesivas enmiendas
---------------------------------	----------------------------	-----------------------------	--

Basate sulle legislazioni degli Stati membri in relazione alla compatibilità elettromagnetica ed alla sicurezza dei prodotti.
 On the approximation of the laws of Member States relating to electromagnetic compatibility and product safety.
 Basée sur la législation des Etats membres relative à la compatibilité électromagnétique et à la sécurité des produits.
 Über die Annäherung der Gesetze der Mitgliedsstaaten in bezug auf elektromagnetische Verträglichkeit und Produktsicherheit entsprechen.
 Basado en la aproximación de las leyes de los Países Miembros respecto a la compatibilidad electromagnética y las Medidas de seguridad relativas al producto.

Questa dichiarazione è basata sulla conformità dei prodotti alle norme seguenti:
 This declaration is based upon compliance of the products to the following standards:
 Cette déclaration repose sur la conformité des produits aux normes suivantes:
 Diese Erklärung basiert darauf, daß das Produkt den folgenden Normen entspricht:
 Esta declaración se basa en el cumplimiento de los productos con las siguientes normas:

EN 55022 (CLASS A ITE), August 1994:
AMENDMENT A1 (CLASS A ITE), October 2000:

LIMITS AND METHODS OF MEASUREMENTS OF RADIO
 DISTURBANCE CHARACTERISTICS OF INFORMATION
 TECHNOLOGY EQUIPMENT

EN 61000-6-2, October 2001:

ELECTROMAGNETIC COMPATIBILITY (EMC).
 PART 6-2: GENERIC STANDARDS - IMMUNITY FOR INDUSTRIAL
 ENVIRONMENTS.

March 1st, 2007



PowerScan®
D8340 READERS
QUICK REFERENCE GUIDE



820002160 (Rev. B)

2/08

UPDATES AND LANGUAGE AVAILABILITY

UK/US

The latest drivers and documentation updates for this product are available on Internet.

Log on to : www.scanning.datalogic.com

I

Su Internet sono disponibili le versioni aggiornate di driver e documentazione di questo prodotto. Questo manuale è disponibile anche nella versione italiana. Collegarsi a : www.scanning.datalogic.com

F

Les versions mises à jour de drivers et documentation de ce produit sont disponibles sur Internet. Ce manuel est aussi disponible en version française. Cliquez sur : www.scanning.datalogic.com

D

Im Internet finden Sie die aktuellsten Versionen der Treiber und Dokumentation für dieses Produkt. Die deutschsprachige Version dieses Handbuchs ist auch verfügbar.

Adresse : www.scanning.datalogic.com

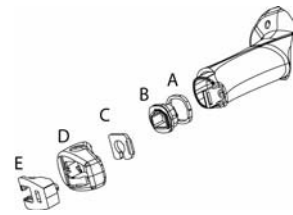
E

En Internet están disponibles las versiones actualizadas de los drivers y documentación de este producto. También está disponible la versión en español de este manual.

Dirección Internet : www.scanning.datalogic.com

CONNECTIONS

CONNECTING THE CABLE



- A. Rubber gasket
- B. Plastic boot
- C. Cable spacer
- D. Cover
- E. Strain relief

① Slip the cover over the cable.

② Push the plastic boot into the rubber gasket. Take care that the tab on the plastic boot is aligned with the notch in the rubber gasket.

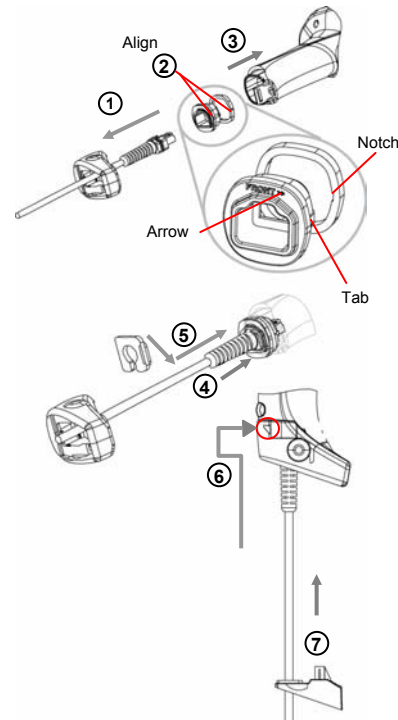
③ Push the plastic boot and gasket into the handle. Ensure that the "Front" marking on the plastic boot is facing out, with the arrow pointing towards the front of the scanner.

④ Insert the cable into the socket of the plastic boot.

⑤ Insert the cable spacer into the cable wire and slide it towards the handle.

⑥ Push the cover along the cable towards the reader, and hook it over the yellow "tooth".

⑦ Insert the strain relief into the cover and tighten the screw to fix the whole assembly to the reader handle.



COMPLIANCE

LASER SAFETY COMPLIANCE

The laser scanner conforms to the applicable requirements of both CDRH 21 CFR 1040 and EN60825-1 at the date of manufacture.

The laser light is visible to the human eye and is emitted from the output window ①.

Laser warning and classification label ②.

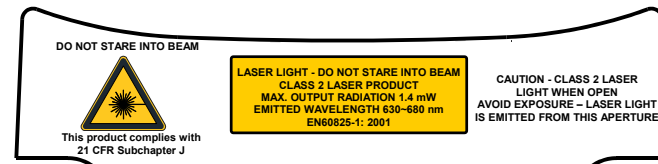


CAUTION:

Use of controls or adjustments or performance of procedures other than those specified herein may result in exposure to hazardous visible laser light.

The laser scanner utilizes a low-power laser diode. Although staring directly at the laser beam momentarily causes no known biological damage, avoid staring at the beam as one would with any very strong light source, such as the sun. Avoid that the laser beam hits the eye of an observer, even through reflective surfaces such as mirrors, etc.

The following information is shown on the laser scanner device class label:



ITALIANO
 LUCE LASER
 NON FISSARE IL RAGGIO
 APPARECCHIO LASER DI CLASSE 2

FRANÇAIS
 RAYON LASER
 EVITER DE REGARDER LE RAYON
 APPAREIL LASER DE CLASSE 2

DEUTSCH
 LASERSTRAHLUNG
 NICHT IN DEN STRAHL BLICKEN
 PRODUKT DER LASERKLASSE 2

ESPAÑOL
 RAYO LÁSER
 NO MIRAR FIJO EL RAYO
 APARATO LÁSER DE CLASE 2

LED CLASS

Class 1 LED product.

This product conforms to EN60825-1:2001.

CE COMPLIANCE

Warning:
 This is a Class A product. In a domestic environment this product may cause radio interference in which case the user may be required to take adequate measures.

FCC COMPLIANCE

Modifications or changes to this equipment without the expressed written approval of Datalogic could void the authority to use the equipment.

This device complies with PART 15 of the FCC Rules. Operation is subject to the following two conditions: (1) This device may not cause harmful interference, and (2) this device must accept any interference received, including interference which may cause undesired operation.

This equipment has been tested and found to comply with the limits for a Class A digital device, pursuant to part 15 of the FCC Rules. These limits are designed to provide reasonable protection against harmful interference when the equipment is operated in a commercial environment. This equipment generates, uses, and can radiate radio frequency energy and, if not installed and used in accordance with the instruction manual, may cause harmful interference to radio communications. Operation of this equipment in a residential area is likely to cause harmful interference in which case the user will be required to correct the interference at his own expense.

POWER SUPPLY

This device is intended to be connected to a UL Listed/CSA Certified computer which supplies power directly to the reader or else be supplied by a UL Listed/CSA Certified Power Unit marked "Class 2" or LPS power source rated 5 V, minimum 180 mA, which supplies power directly to the reader via the power connector of the cable.

WEEE COMPLIANCE



For information about the disposal of Waste Electrical and Electronic Equipment (WEEE), please refer to the website at www.scanning.datalogic.com.

PATENTS

This product is covered by one or more of the following patents:

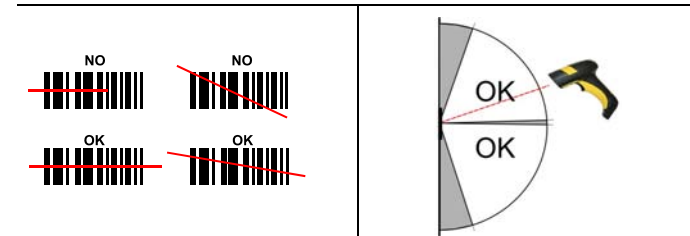
U.S. patents 5,449,893; 5,103,080; 5,262,627; 5,367,151; 5,545,889; 5,917,173; 5,923,025; 5,945,659; 6,098,877; 6,220,514; 6,607,132; 6,817,529; 6,834,805

European patents 789,315 B1; 895,175 B1; and 1,128,315 B1

Additional Patents and Design Patents pending.

USING POWERSCAN® D8340 SERIES READERS

PowerScan® D8340 readers automatically scan barcodes **at a distance**. Simply aim and pull the trigger. Code scanning is performed along the scan line emitted from the reading window. This line must cross the entire code. The best reading angles are indicated in the figure below.



TECHNICAL FEATURES

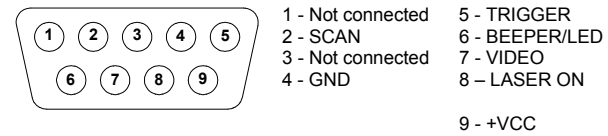
PowerScan® D8340/D8340 AR

Electrical Features	PowerScan® D8340	PowerScan® D8340 AR
Power Supply	4 to 30 VDC	
Max. Consumption:	0.076 mm (3 mils)	0.25 mm (10 mils)
@ 4V	420 mA	500 mA
@ 5V	310 mA	370 mA
@ 30V	62 mA	70 mA
Sleep mode	4 mA	4 mA
Scan Rate	35 ± 5 scans/sec	
Reading Indicators	Good Read LED (green) Good Read Spot (green), Beeper	
Optical Features	PowerScan® D8340	PowerScan® D8340 AR
Reading Field (Typical performance at 20°C / 68°F on high quality barcodes)	110 cm (43.3 in) @ 55 mils	1090 cm (429.13 in) @ 100 mils reflective
Max. Resolution	0.076 mm (3 mils)	0.178 (7.5 mils)
PCS (Datalogic Test Chart)	15%	25%
Laser Features		
Power (max)	0.9 mW	1.3 mW
Scan Angle	42°	13.5° ± 0.7
Laser Safety Class	Class 2 EN 60825-1/CDRH	
Environmental Features		
Working Temperature	-30 °C to + 50 °C / -22° to +122 °F	
Storage Temperature	-30 °C to + 70 °C / -22° to +158 °F	
Humidity	90% non condensing	
Drop Resistance	IEC 68-2-32 Test ED 2 m	
Protection Class	IP65	
Mechanical Features		
Weight (without cable)	about 295 g (10.4 oz)	
Cable Length	2 m (6 ft 6 in)	

ELECTRICAL CONNECTIONS

The PowerScan® D8340/D8340 AR scanner can be used with CAB 468 (coiled cable and 9-pin male connector) for direct connection to the DATAPLUS and DLD series decoders.

CAB 468



9-pin male connector

A definition of the terms used to identify the pins is as follows:

SCAN This scanner "open collector" output signal is used to synchronize the decoding logic with the scanner. Each transition of this signal from low-to-high or high-to-low corresponds to the start of a scan. The signal is a TTL level 57 ms period square wave (see the following figure Video and Scan signals).

GND Supply ground and signal reference.

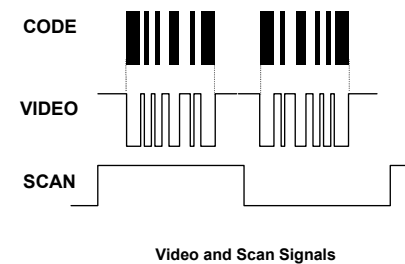
TRIGGER This output is connected to GND when the trigger is pressed and is left floating when the trigger is released.

BEEPER/LED This scanner input drives the green decoding LED, and the beeper in the scanner. The LED turns on when a positive current is applied to the pin. The beeper sound is obtained pulsating this current at a frequency of about 2 kHz. The maximum voltage that can be applied to this input is 5 VDC.

VIDEO This "open collector" scanner output is electrically identical to the barcode. It supplies a series of pulses the length of which are proportional to the width of the elements within the barcode read. A low output level corresponds to a bar. The frequency of the pulses depends on the density of the code, the distance from code and the programmed output scan frequency (see the following figure Video and Scan signals).

LASER ON A positive voltage between 4.75 and 5 VDC is applied to this input by the decoder when the decoding logic senses the trigger is pressed; this causes the laser to start scanning and the red LED to turn on.

+VCC This input must be connected to the positive pin of the supply voltage (4.75 - 14 VDC). When the LASER ON pin is positive, all the current necessary to power the scanner flows through +VCC.



Video and Scan Signals