



**Zebra®**  
**MZ™ Series**  
**Mobile Printers**  
**User Guide**





# Table of Contents

---

|   |           |
|---|-----------|
| <b>Proprietary Statements</b> .....                       | <b>5</b>  |
| <b>Document Conventions</b> .....                         | <b>7</b>  |
| <b>Introduction to the MZ Series</b> .....                | <b>8</b>  |
| Unpacking and Inspection .....                            | 8         |
| Reporting Damage .....                                    | 8         |
| <b>Getting Ready to Print</b> .....                       | <b>10</b> |
| Battery .....   | 10        |
| Installing the Battery .....                              | 10        |
| MZ Series Quad Power Station .....                        | 13        |
| Battery Safety .....                                      | 14        |
| Charger Safety .....                                      | 14        |
| Loading the Media (All models) .....                      | 15        |
| Using Pre-Printed Receipt Media .....                     | 16        |
| Operator Controls .....                                   | 18        |
| Verify the Printer Is Working .....                       | 20        |
| Printing a Configuration Label .....                      | 20        |
| Connecting the Printer .....                              | 20        |
| Cable Communication .....                                 | 21        |
| IR Communications .....                                   | 22        |
| Wireless Communications with Bluetooth™ .....             | 23        |
| Bluetooth Networking Overview .....                       | 23        |
| WLAN Overview .....                                       | 24        |
| Setting Up the Software .....                             | 24        |
| <b>Radio Regulatory Information</b> .....                 | <b>25</b> |
| Zebra Bluetooth Radios MZ-ZBR3 and MZ-ZBR4 .....          | 25        |
| European Regulatory Information for this Radio .....      | 25        |
| WLAN Module Using 802.11b/g Radio .....                   | 26        |
| European Regulatory Information for this Radio .....      | 26        |
| Korean Regulatory Information for This Printer .....      | 28        |
| <b>Wearing the Printer</b> .....                          | <b>29</b> |
| Belt Clip .....   | 29        |
| Adjustable Shoulder Strap .....                           | 30        |
| <b>Preventive Maintenance</b> .....                       | <b>31</b> |
| Extending Battery Life .....                              | 31        |
| General Cleaning Instructions .....                       | 32        |
| <b>Troubleshooting</b> .....                              | <b>34</b> |
| Interpreting Indicators .....                             | 34        |
| Troubleshooting Topics .....                              | 34        |
| Resetting an MZ Series Printer .....                      | 36        |
| Determining Your Printer Version .....                    | 36        |
| Troubleshooting Tests .....                               | 37        |
| Printing a Configuration Label .....                      | 37        |
| Communications Diagnostics .....                          | 37        |
| Calling Technical Support .....                           | 38        |
| <b>Specifications</b> .....                               | <b>42</b> |
| Printing Specifications .....                             | 42        |
| Memory and Communications Specifications, MZ series ..... | 42        |
| Media Specifications .....                                | 42        |
| Font and Bar Code Specifications for MZ Series .....      | 43        |

continued

---

|   |           |
|---|-----------|
| USB Communications Port .....                               | 44        |
| Physical, Environmental and Electrical Specifications ..... | 44        |
| MZ Series Accessories .....                                 | 46        |
| <b>Appendix A</b> .....                                     | <b>47</b> |
| Interface Cables .....                                      | 47        |
| USB Cable .....   | 47        |
| More Interface Cables .....                                 | 47        |
| <b>Appendix B</b> .....                                     | <b>48</b> |
| Media Supplies .....  | 48        |
| MZ Series Media .....                                       | 48        |
| <b>Appendix C</b> .....                                     | <b>48</b> |
| Maintenance Supplies .....                                  | 48        |
| <b>Appendix D</b> .....                                     | <b>49</b> |
| Battery Disposal .....                                      | 49        |
| Product Disposal .....                                      | 49        |
| <b>Appendix E</b> .....                                     | <b>50</b> |
| Product Support .....                                       | 50        |
| Product Support Contacts .....                              | 51        |
| <b>Appendix F</b> .....                                     | <b>52</b> |
| Using zebra.com .....                                       | 52        |
| <b>Index</b> .....  | <b>54</b> |
| <b>Patent Numbers</b> .....                                 | <b>55</b> |

# Proprietary Statements

---

This manual contains proprietary information of Zebra Technologies Corporation. It is intended solely for the information and use of parties operating and maintaining the equipment described herein. Such proprietary information may not be used, reproduced, or disclosed to any other parties for any other purpose without the expressed written permission of Zebra Technologies Corporation.

## Product Improvements

Since continuous product improvement is a policy of Zebra Technologies Corporation, all specifications and signs are subject to change without notice.

## FCC Compliance Statement

NOTE: This equipment has been tested and found to comply with the limits of a Class B digital device, pursuant to Part 15 of the FCC Rules. These limits are designed to provide reasonable protection against harmful interference in a residential installation. This equipment generates, uses and can radiate radio frequency energy and, if not installed and used in accordance with the instructions, may cause harmful interference to radio communications. However, there is no guarantee that interference will not occur in a particular installation. If this equipment does cause harmful interference to radio or television reception, which can be determined by turning the equipment off and on, the user is encouraged to try to correct the interference by one or more of the following measures:

- Reorient or relocate the receiving antenna.
- Increase the separation between the equipment and receiver.
- Connect the equipment into an outlet or circuit different from that to which the receiver is connected.
- Consult the dealer or an experienced radio/TV technician for help.

WARNING: Exposure to Radio Frequency radiation. To conform to FCC RF exposure requirements this device shall be used in accordance with the operating conditions and instructions listed in this manual. Note that there are several radio options available with this printer. Additional regulatory information is contained in later sections devoted to each radio individually.

NOTE: This unit was tested with shielded cables on the peripheral devices. Shielded cables must be used with the unit to insure compliance.

Changes or modifications to this unit not expressly approved by Zebra Technologies Corporation could void the user's authority to operate this equipment.

## Canadian Compliance Statement

This Class B digital apparatus complies with Canadian ICES-003.

Cet appareil numérique de la classe B est conforme à la norme NMB-003 du Canada.

"IC:" before the equipment certification number signifies that the Industry Canada technical specifications were met. It does not guarantee that the certified product will operate to the user's satisfaction.

## Agency Approvals and Regulatory Information

- Design certified by TUV
- Canadian STD RSS-210
- EN60950: 2000 Safety Standard
- C-Tick (Australia)
- FCC part 15
- EN55024:1998 European Immunity Standard
- NOM/NYCE (Mexico)
- EN55022:1998 Class B European Electromagnetic Radiation Standard

## Liability Disclaimer

Inasmuch as every effort has been made to supply accurate information in this manual, Zebra Technologies Corporation is not liable for any erroneous information or omissions. Zebra Technologies Corporation reserves the right to correct any such errors and disclaims liability resulting therefrom.

## No Liability for Consequential Damage

In no event shall Zebra Technologies Corporation or anyone else involved in the creation, production, or delivery of the accompanying product (including hardware and software) be liable for any damages whatsoever (including, without limitation, damages for loss of business profits, business interruption, loss of business information, or other pecuniary loss) arising out of the use of or the results of use of or inability to use such product, even if Zebra Technologies Corporation has been advised of the possibility of such damages. Because some states do not allow the exclusion of liability for consequential or incidental damages, the above limitation may not apply to you.

continued

---

## Copyrights

The copyrights in this manual and the label print engine described therein are owned by Zebra Technologies Corporation. Unauthorized reproduction of this manual or the software in the label print engine may result in imprisonment of up to one year and fines of up to \$10,000 (17 U.S.C.506). Copyright violators may be subject to civil liability.

This product may contain ZPL<sup>®</sup>, ZPL II<sup>®</sup>, and ZebraLink<sup>™</sup> programs; Element Energy Equalizer<sup>®</sup> Circuit; E3<sup>®</sup>; and AGFA fonts. Software © ZIH Corp. All rights reserved worldwide. ZebraLink and all product names and numbers are trademarks, and Zebra, the Zebra logo, ZPL, ZPL II, Element Energy Equalizer Circuit, and E3 Circuit are registered trademarks of ZIH Corp. All rights reserved worldwide.

Monotype<sup>®</sup>, Intellifont<sup>®</sup> and UFST<sup>®</sup> are trademarks of Monotype Imaging, Inc. registered in the United States Patent and Trademark Office and may be registered in certain jurisdictions.

Andy<sup>™</sup>, CG Palacio<sup>™</sup>, CG Century Schoolbook<sup>™</sup>, CG Triumvirate<sup>™</sup>, CG Times<sup>™</sup>, Monotype Kai<sup>™</sup>, Monotype Mincho<sup>™</sup> and Monotype Sung<sup>™</sup> are trademarks of Monotype Imaging, Inc. and may be registered in some jurisdictions.

HY Gothic Hangul<sup>™</sup> is a trademark of Hanyang Systems, Inc.

Angsana<sup>™</sup> is a trademark of Unity Progress Company (UPC) Limited.

Andale<sup>®</sup>, Arial<sup>®</sup>, Book Antiqua<sup>®</sup>, Corsiva<sup>®</sup>, Gill Sans<sup>®</sup>, Sorts<sup>®</sup> and Times New Roman<sup>®</sup> are trademarks of The Monotype Corporation registered in the United States Patent and Trademark Office and may be registered in certain jurisdictions.

Century Gothic<sup>™</sup>, Bookman Old Style<sup>™</sup> and Century Schoolbook<sup>™</sup> are trademarks of The Monotype Corporation and may be registered in certain jurisdictions.

HGPGothicB is a trademark of the Ricoh company, Ltd. and may be registered in some jurisdictions.

Univers<sup>™</sup> is a trademark of Heidelberger Druckmaschinen AG, which may be registered in certain jurisdictions, exclusively licensed through Linotype Library GmbH, a wholly owned subsidiary of Heidelberger Druckmaschinen AG.

Futura<sup>®</sup> is a trademark of Bauer Types SA registered in the United States Patent and Trademark Office and may be registered in some jurisdictions.

TrueType<sup>®</sup> is a trademark of Apple Computer, Inc. registered in the United States Patent and Trademark Office and may be registered in certain jurisdictions.

All other product names are the property of their respective owners.

All other brand names, product names, or trademarks belong to their respective holders.

©2006 ZIH Corp.

## Document Conventions

---

The following conventions are used throughout this document to convey certain information:

If you are viewing this guide online, click the *underlined text* to jump to a related Web site. Click on *italic text* (not underlined) to jump to that location in this manual.

### Cautions, Important, and Note

---



**Caution** • Warns you of the potential for electrostatic discharge.

---



**Caution** • Warns you of a potential electric shock situation.

---



**Caution** • Warns you of a situation where excessive heat could cause a burn.

---



**Caution** • Advises you that failure to take or avoid a specific action could result in physical harm to you.

---

**Caution** • Advises you that failure to take or avoid a specific action could result in physical harm to the hardware.

---



**Important** • Advises you of information that is essential to complete a task.

---



**Note** • Indicates neutral or positive information that emphasizes or supplements important points of the main text.

---

# Introduction to the MZ Series

---

Thank you for choosing one of our Zebra® MZ™ series Mobile Printers. These rugged printers are sure to become productive and efficient additions to your workplace thanks to their innovative design. Because they are made by Zebra Technologies, you're assured of world-class support for all of your bar code printers, software, and supplies.

- This user's guide gives you the information you will need to operate any MZ series printer.
- The MZ series uses the CPCL programming language. To create and print labels using the CPCL language, refer to the Mobile Printing Systems CPCL Programming Guide and our Label Vista™ label creation program which are both available on either the MZ series product CD or at [www.zebra.com](http://www.zebra.com).

## Unpacking and Inspection

Inspect the printer for possible shipping damage:

- Check all exterior surfaces for damage.
- Open the media cover (refer to "Loading the Media" in the Getting Ready to Print section) and inspect the media compartment for damage.

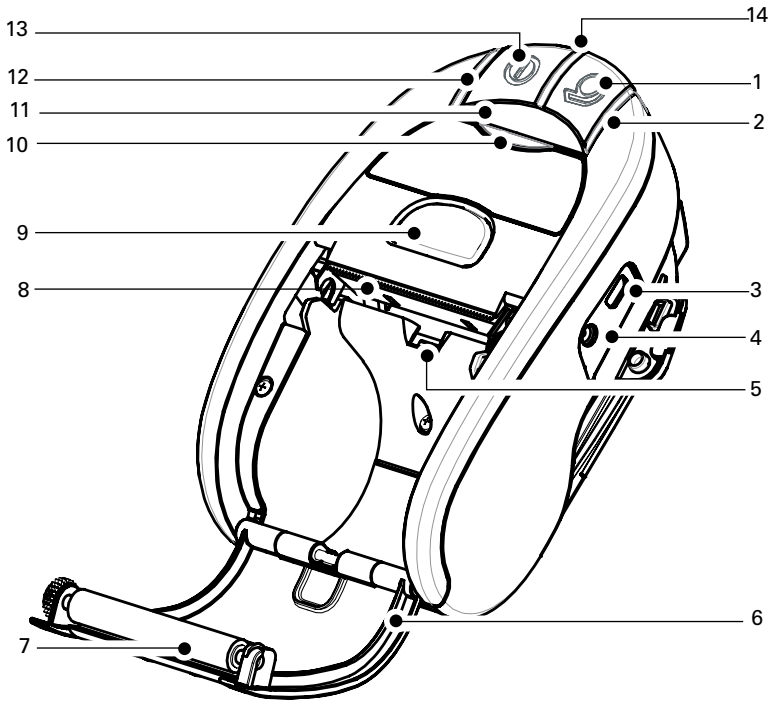
In case shipping is required, save the carton and all packing material.

## Reporting Damage

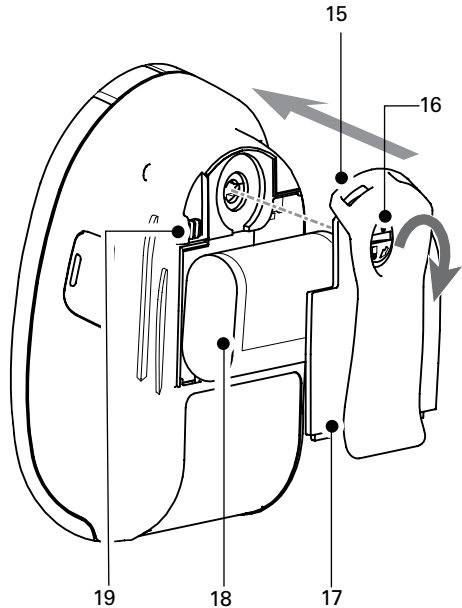
If you discover shipping damage:

- Immediately notify and file a damage report with the shipping company. Zebra Technologies Corporation is not responsible for any damage incurred during shipment of the printer and will not cover the repair of this damage under its warranty policy.
- Keep the carton and all packing material for inspection.
- Notify your authorized Zebra re-seller.

**Figure 1: MZ Series Overview (MZ 220 Illustrated)**



1. Feed Switch
2. Media Status Light
3. USB Port
4. Battery Charging Receptacle
5. Media/Black Bar Sensor
6. Media Cover
7. Platen
8. Printhead
9. Latch Release Button
10. Communications Status Indicator
11. IR window
12. Charge Status Indicator
13. Power Switch
14. Power Indicator
15. Belt Clip
16. Battery Door Latch
17. Battery Compartment Cover
18. Battery Pack
19. External Charge Contacts



# Getting Ready to Print

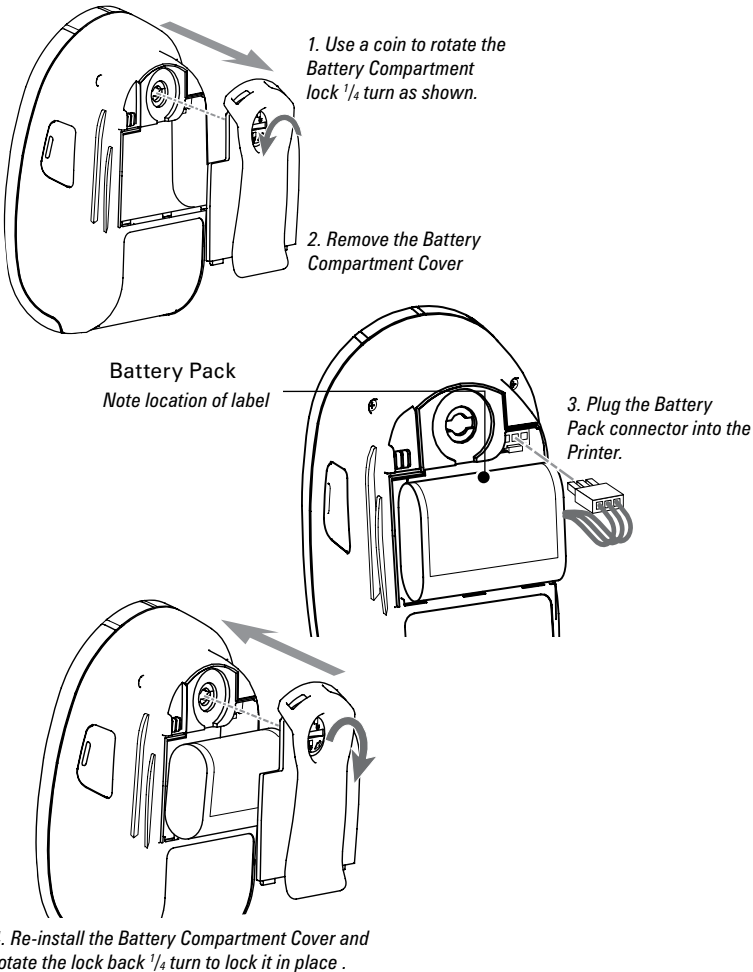
## Battery

### Installing the Battery



**Important • Batteries are shipped partially charged. Remove any protective packaging from new battery packs prior to use.**

**Figure 2: Installing the Battery**



**Ensure the battery leads are not pinched prior to replacing the battery cover.**

When the battery is first installed, the printer power and charge indicators should indicate the battery is not fully charged (see “Charging the Battery” below and “Operator Controls”).



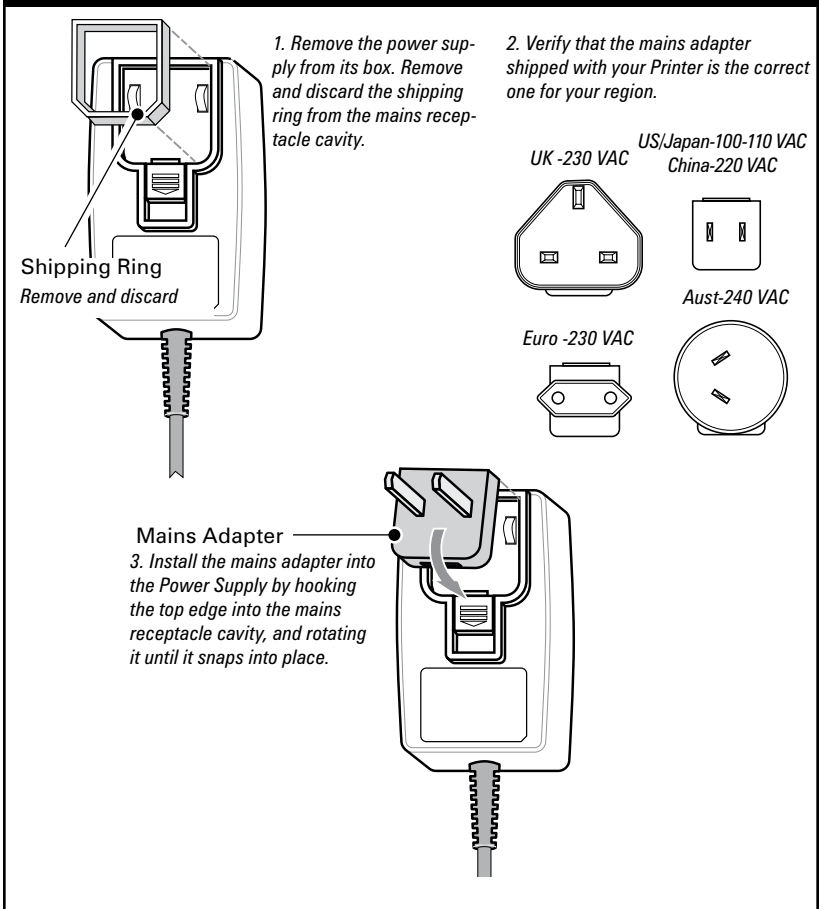
**You must charge the battery fully before using the printer for the first time.**

## Charging the Battery

### Preparing the Charger Power Supply

Before charging the battery for the first time, you must prepare the Charger Power Supply. Refer to Figure 3 below:

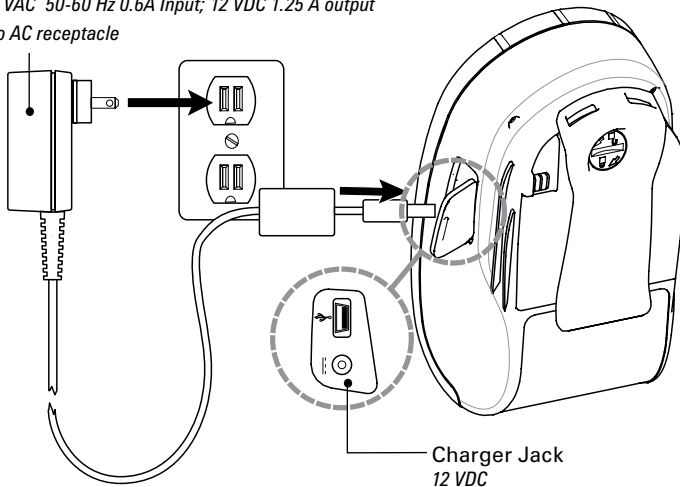
**Figure 3: Preparing the Charger Power Supply**



continued

**Figure 4: Charging the Battery**

MZ Series Charger Power Supply p/n AT17947-1  
110-240 VAC 50-60 Hz 0.6A Input; 12 VDC 1.25 A output  
Plug into AC receptacle



### Charging the battery

Refer to Figure 4.

1. Plug the Charger Power Supply into the appropriate A.C. wall receptacle. Then insert the charge cable into the printer's charger jack.
2. The printer's charger indicator will indicate the status of the charger as follows:
  - An amber light indicates the battery is charging, and that the battery is less than 90% charged.
  - A green light indicates the battery is fully charged. The battery is ready for use.

### Approximate Charge Times :

Batteries are fully charged after 2.5 hours from the low-battery shut-off state. Partially discharged batteries will take less time to charge.



**NOTES:** Use of the printer while charging will increase charge times.  
Charge times are for completely discharged batteries.  
As a safety feature the battery will stop charging after 4.5 hours regardless of the battery's charge state.

---

## MZ Series Quad Power Station

The MZ series Quad Power Station is designed to dock and charge up to four MZ series printers of either type simultaneously.

1. Ensure that the Power Station has been installed properly per its instruction manual. Ensure that the power supply is properly connected and its power indicator light is on.
2. Slide a printer into any one of the four docking bays as shown in Figure 5.

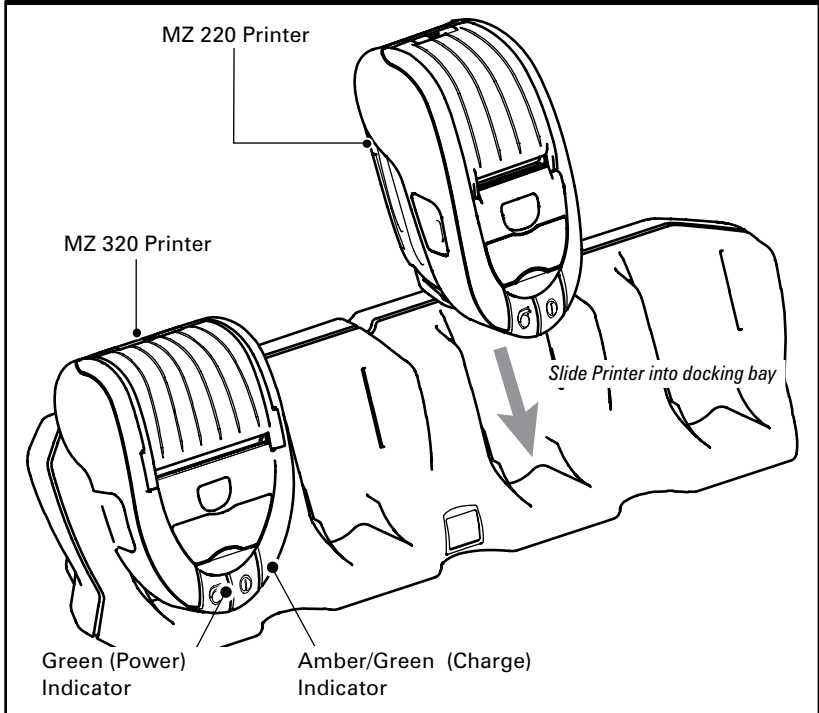


**NOTES:** *If you are using a shoulder strap, ensure it is pulled away from the printer when installing in the Power Station.  
Do not use the printer when it is installed in the Power Station*

The printer's charge status indicator will turn amber if the printer is properly inserted and the battery is less than 90% charged.

The printer's charge indicators will allow you to monitor the

**Figure 5: MZ Series Quad Power Station**



---

charging process. Refer to the Controls section of this manual for more information.

## Battery Safety

---



**Caution • Avoid accidental short circuiting of any battery. Allowing battery terminals to contact conductive material will create a short circuit which could cause burns and other injuries or could start a fire.**

---



**Important • Always dispose of used batteries properly. Refer to Appendix D for more battery recycling information.**

---

**Caution • Use of any charger not approved specifically by Zebra for use with its batteries could cause damage to the battery pack or the printer and will void the warranty.**

---



**Read carefully and always observe the safety guidelines for Li-Ion batteries provided with each Battery Pack.**

---

## Charger Safety

---



**Do not place the Power Station in locations where liquids or metallic objects may be dropped into the charging bays.**

---



**Use care when installing either the Charger Power Supply shipped with the printer or the power supply supplied with the MZ series Power Station. Do not block the ventilating slots on the top and bottom covers of either power supply.**  
**Ensure that the Charger Power Supply is plugged into a power source which will not accidentally be turned off if you will be charging batteries overnight.**

---





















































































