

BALOGH

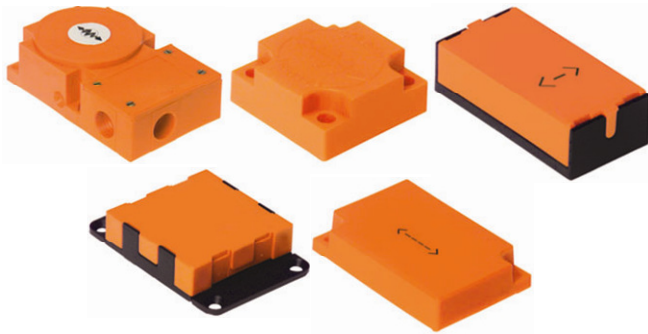


WWW.BALOGHRFID.COM

GIE Tag Series Industrial Read/Write Tags 512 Byte/2K Byte/8K Byte

Passive Industrial RFID Tags

Orange Product Range

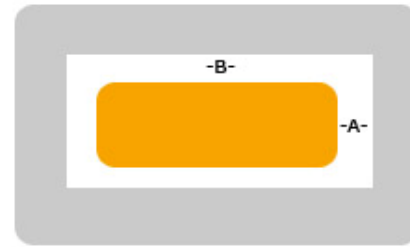


Common Tag Characteristics

- Read/Write
- No needed power source (Passive Technology)
- Ferro-Electric Ram
- 10¹⁰ Write Cycles, Unlimited Reads
- Typical R/W Time 25 ms Instruction + 5 ms per Byte
- -25°C up to 85°C Operating Temperature
- Rislun Housing with Urethane Potting
- IP 65 Case Rating (GIE-931 is IP-67)

Tag Environment

- GIE Series tags can be mounted recessed in metal, as long as a metal free clearance on the sides of the tag is observed.
- Please use the chart below to see specific metal clearance tolerances for each GIE Tag.



Transceiver Compatibility Chart

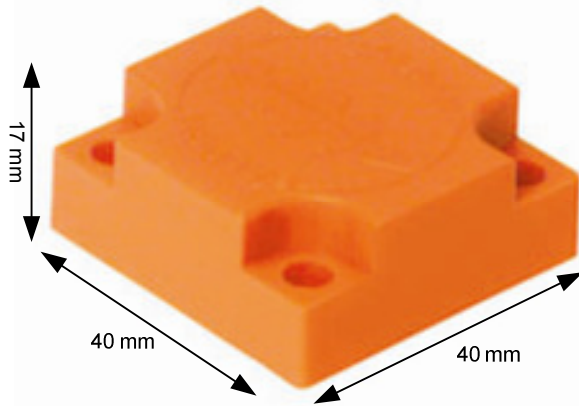
Tag Style	ERA-85	ERA-80	ERO-71	ERO-85	ERO-100	ERO-80	TLEB-891	Memory	Metal Clearance
711	--	--	20 mm	55 mm	55 mm	--	23 mm	512, 2K, 8K	A and B ≥ 10 mm
731	--	--	12.5 mm	45 mm	45 mm	--	15 mm	512, 2K	A and B ≥ 10 mm
831	30 mm	28 mm	25 mm	80 mm	80 mm	120 mm	--	512, 2K, 8K	A and B ≥ 10 mm
851	35 mm	40 mm	--	100 mm	100 mm	160 mm	--	512, 2K, 8K	A and B ≥ 30 mm
931	--	--	25 mm	80 mm	80 mm	100 mm	45 mm	512, 2K, 8K	A and B ≥ 10 mm

Distance Between Tags and Other Information

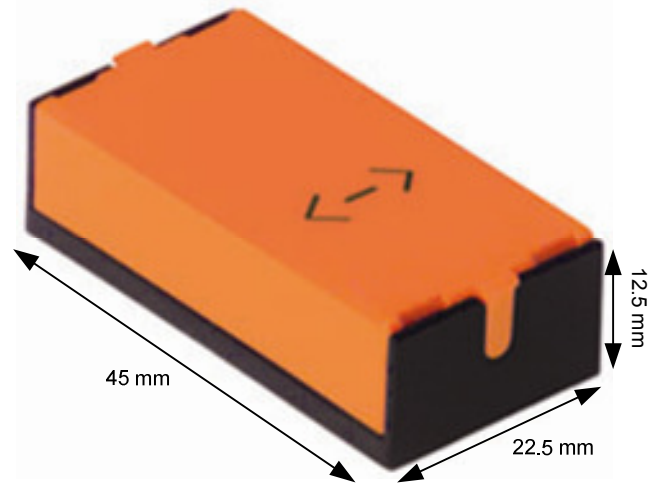
Tag Style	ERA-85	ERA-80	ERO-71	ERO-85	ERO-100	ERO-80	TLEB-891	Weight	
711	--	--	100 mm	200 mm	200 mm	--	100 mm	35 g	
731	--	--	56 mm	140 mm	140 mm	--	60 mm	25 g	
831	100 mm	340 mm	80 mm	220 mm	220 mm	240 mm	110 mm	100 g	
851	120 mm	400 mm	--	300 mm	300 mm	400 mm	--	450 g	
931	100 mm	340 mm	80 mm	220 mm	220 mm	340 mm	110 mm	100 g	

GIE Tags

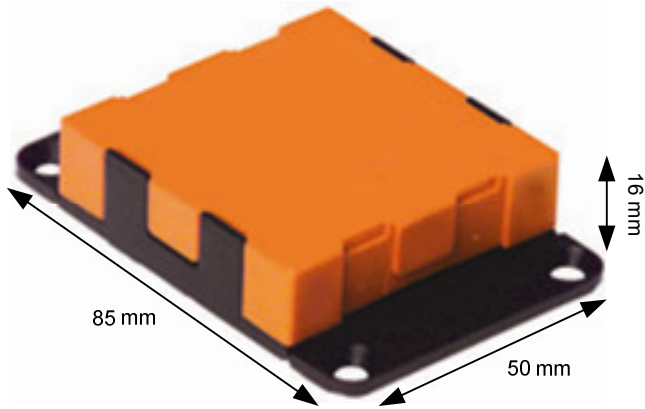
GIE-711



GIE-731



GIE-831



GIE-851



GIE-931

