



Get Wi-Fi That Works

Ekahau Site Survey

The Wi-Fi Design, Verification and Troubleshooting Solution

FEATURES AND BENEFITS

Design a network

- Design an 802.11 abgn wireless network in 3D*
- Visualize the network prior to deployment*

Perform verification site surveys

- Comprehensive 802.11 abgn site surveys
- Automatically locate all access points
- Simultaneous survey work supported
- GPS assisted outdoor site surveys*

Analyze, optimize and report

- Visualize signal strength, SNR, data rate, interference, signal overlap, roaming
- Instantly see if your requirements are met
- Generates automated network reports*

Troubleshoot

- Instant troubleshooting using Live Network Status
- Immediately see problematic locations on a map
- Find rogue APs, misconfigured or broken APs, missing SSIDs, and misconfigured security settings

* = Available in Ekahau Site Survey Professional version
All other features also available in Ekahau Site Survey Standard version

For IT managers, administrators and wireless professionals, Ekahau Site Survey (ESS) is the easy-to-use solution for designing, verifying and troubleshooting any 802.11a/b/g/n Wi-Fi network. ESS is a software-based network visualization tool that runs on a laptop computer equipped with a supported Wi-Fi adapter.

ESS eliminates complexity and optimizes performance of Wi-Fi networks that are used for a variety of applications, including VoIP, video, location tracking, or just pure data transfer.

With a single view, ESS allows you to see and optimize your network performance and eliminate performance bottlenecks such as coverage holes, interference or misconfigurations. ESS is the superior Wi-Fi toolkit whether you're deploying a Wi-Fi network from scratch, verifying an existing network or troubleshooting.

The 802.11n standard delivers significantly higher data rates and improved range. ESS helps you to understand and maximize the potential of your 802.11n network, as well as legacy 802.11ab networks.

Plan Your Network from Top to Bottom

When designing a network, ESS helps you to create and visualize a complete, enterprise-grade network layout – without visiting the site. You will be able to optimize the number of APs needed, the best locations for the APs, configurations and antenna types. Thanks to the 3D capabilities, ESS allows you to use the signal leakage between floors to your benefit while minimizing the inter-floor channel interference.

The network planning features assist in greenfield deployments as well as in network expansions.

Verify Network Coverage and Performance

With a single site survey, ESS allows you to understand your network coverage and performance. During the survey, ESS discovers all the audible access points and automatically locates them after the survey.

Typically a site survey is done before the network is fully utilized, which may lead to inaccurate site survey results. But with ESS, this is not the case. Using its simulation capabilities, ESS allows you to survey a new network, and then to simulate what impact varying traffic loads and different Wi-Fi devices will have on network performance.

Analyze and Act

When it comes to Wi-Fi, each network has its own particular requirements. ESS includes pre-defined requirements to determine if your wireless network is sufficient for VoIP, video, web browsing or location tracking – with a single view.

ESS also provides in-depth analysis of your network through accurate visualizations of signal strength, data rates, signal-to-noise ratio, interference, overlap, and roaming. All the visualizations are presented as easy-to-read heat maps.

All of the findings, as well as access point and site information, can be compiled into comprehensive reports with a single mouse click.

Optimize and Troubleshoot

ESS helps you to optimize and troubleshoot typical Wi-Fi issues such as low coverage or insufficient overlap by immediately pinpointing the problems. With the Live Network Status feature, you can simply take your laptop, go to a location where connectivity problems have been detected and ESS will automatically identify the problem. Alternatively, the Network Issues view can be used for showing Wi-Fi issues on a map.

Many network problems can not be detected even by the smartest of Wi-Fi controllers. With ESS you will be able to spot these unseen problems: Fix broken or misconfigured access points, find undetected rogue access points, detect missing SSIDs and security settings, identify and minimize signal leakage, and discover previously invisible coverage holes.

Full Integration with Ekahau RTLS

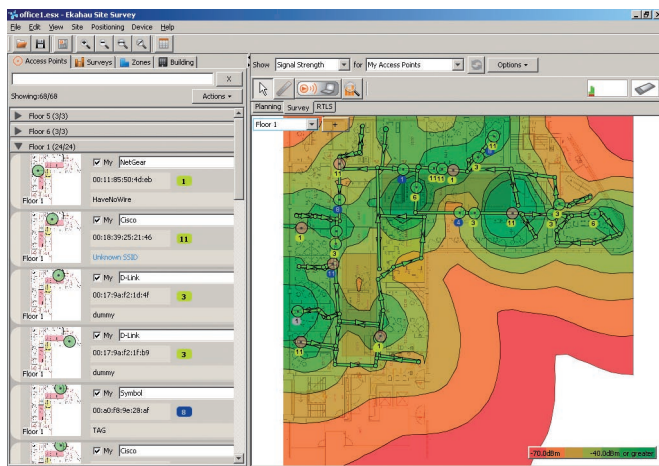
Your Wi-Fi network also can be used to accurately track people and assets using a real time location system (RTLS) from Ekahau (sold separately). ESS fully integrates with Ekahau RTLS, the industry-leading real-time location tracking system, to minimize deployment time and cost.

The Bottom Line

ESS is the tool for visualizing, optimizing and troubleshooting your Wi-Fi network in a simple and intuitive way. With ESS, you will quickly be on your way to Wi-Fi that truly works. Learn more at www.ekahau.com/ess.

System Requirements:

- Laptop with Windows XP, Windows 2000 or Windows Vista: 1.2GHz or faster processor recommended, 1GB RAM (2GB recommended for large installations), 1GB Available Hard Disk Space
- Supported network adapter (see www.ekahau.com/devices), Ekahau NIC-300 recommended
- Floor plan of the facility in BMP/GIF/JPEG/PNG format



Visualize your 802.11 with ESS

For more information about ESS as well as other Ekahau products, visit www.ekahau.com

www.ekahau.com
sales@ekahau.com
info@ekahau.com

West Coast 12930 Saratoga Avenue, Suite B-8
 Saratoga, CA 95070
 Tel: 1-866-4EKAHAU
 Fax: 1-866-435 2428
sales-americas@ekahau.com

East Coast 1851 Alexander Bell Drive
 Suite 150
 Reston, VA 20191
 Tel: 1-866-4EKAHAU
 Fax: 1-703-860 2028
sales-americas@ekahau.com

Europe Tallberginkatu 2
 FI-00180 Helsinki, Finland
 Tel: +358-20-743 5910
 Fax: +358-20-743 5919
sales-europe@ekahau.com

Asia Suite 1002
 Chuang's Tower
 30-32 Connaught Road Central
 Hong Kong
 Tel: +852-3426 4770
 Fax: +852-3426 4061
sales-asia@ekahau.com