

Industrial | www.wincomm.com.tw



WLPM Series

Edge AI Modular Industrial ePlatform Solutions





Edge AI Ready Modular Industrial Panel PCs

In response of IIoT, Wincomm has designed a series of new generation of modular industrial panel pcs, equipped with a various range of configurations to fulfill specific usage and high expansion solutions to best suit for edge AI computing.

Modular Edge AI Industrial Panel PCs



WLPMD-900 Series

15"/17"/19"/21.5"/23.8" Touch Panel
Intel® Coffee Lake-S Core™ i3/i5/i7

- Front IP66 Waterproof and Dustproof,
- Panel Mount, Optional Open Frame/Chassis
- Fanless with Smart Thermal Control
- Full Flat Design with Resistive or P-cap Touch
- CE, FCC, VCCI Class B Passed
- Optional Expansion Slot PCIe x16
- Optional AI Vision Accelerator Card Ready



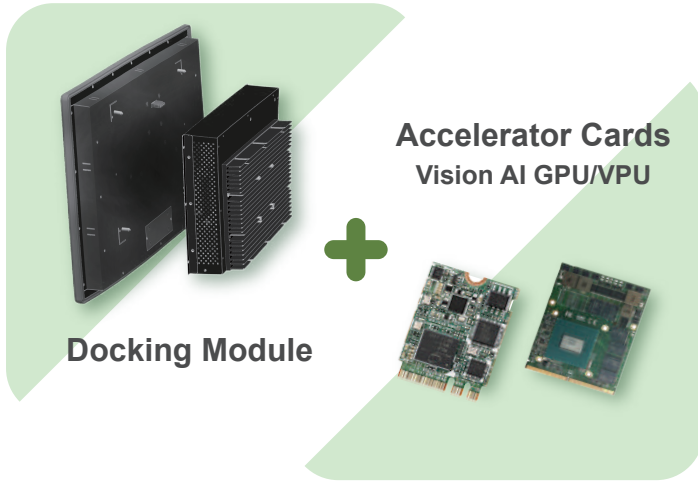
WLPMD-V00 Series

15"/21.5"/23.8" Touch Panel
AMD Ryzen CPU, V1605B

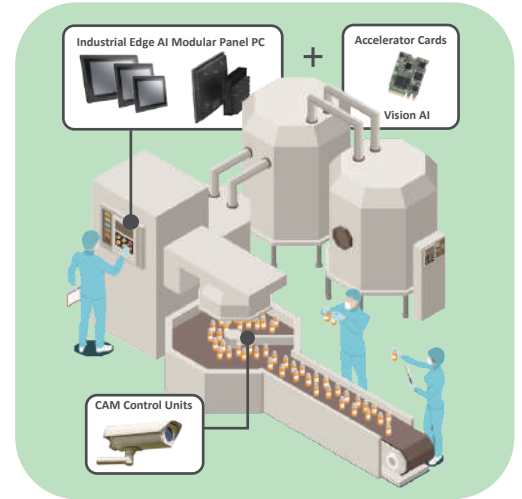
- Front IP66 Waterproof and Dustproof
- Panel Mount, Optional Open Frame/Chassis
- Fanless with Smart Thermal Control
- Full Flat Design with Resistive or P-cap Touch
- CE, FCC, VCCI Class B Passed
- Optional Expansion Slot PCIe x8

Display Module		WLPMD-15	WLPMD-17	WLPMD-19	WLPMD-22	WLPMD-24
LCD	Size/Aspect Ratio	15",4:3	17",4:3	19",5:4	21.5",16:9	23.8",16:9
	Resolution	1024x768	1280x1024	1280x1024	1920x1080	1920x1080
	Max. Color	16.2M	16.2M	16.7M	16.7M	16.7M
	View Angle(H/V)	160/160	170/160	170/160	170/160	178/178
	Brightness	450	350	350	250	250
	Contrast Ratio	800:1	1000:1	1000:1	1000:1	1000:1

Design Features



Edge AI Solutions

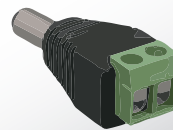
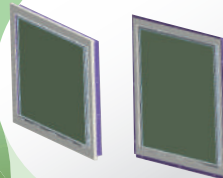


Intelligent Thermal Control - i-Cooling to Optimize Computing / Thermal / Power Management

Optional Open Frame / Chassis Housing Service for Easy Installation in Various Environments

2nd HDD for RAID 0/1 Storage Back-up

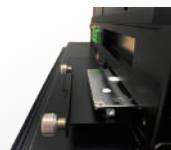
High Computing Power Best Suit for Edge AI Solutions



Terminal Block for Easy Power Plug



Min. Ventilation Grille Avoids Dust for Long Time Usage

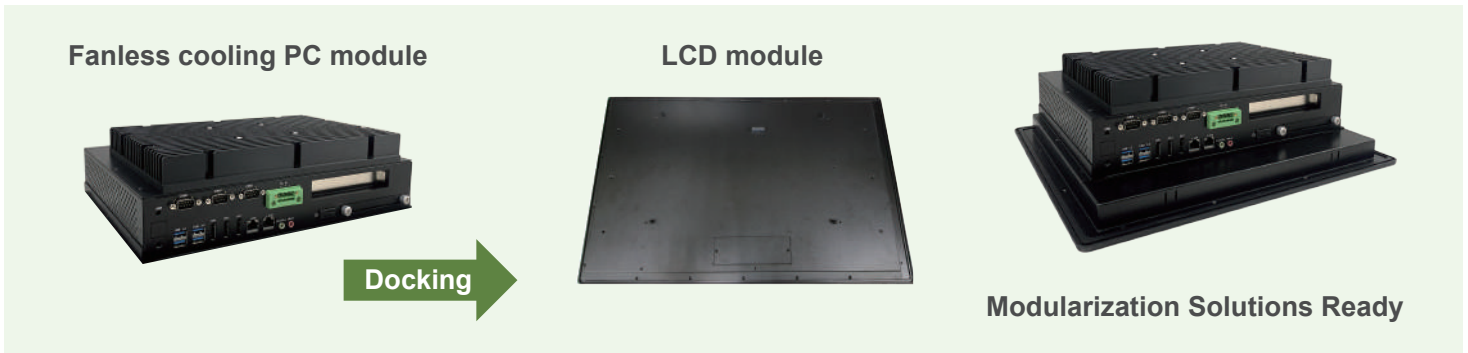


Accessible 2.5" HDD/SSD bay Easy to Replace and Get to the 2.5" Storage



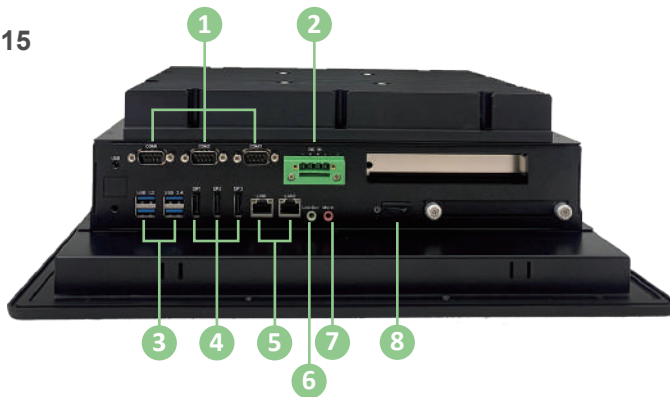
Modularization Solutions Ready Panel Size 15"/17"/19"/21.5"/23.8"

New modularization structure



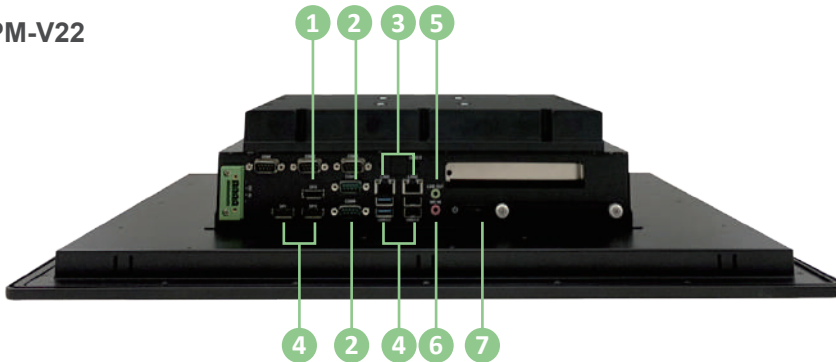
WLPM Series I/O Ports

WLPM-915



- 1 COM x 3
- 2 DC-in
- 3 USB 3.1 x 4
- 4 DP x 3
- 5 LAN x 2
- 6 Line-out
- 7 Micro-in
- 8 Power on/off

WLPM-V22



- 1 DP1.2a x 3
- 2 COM X 2
- 3 LAN x 2
- 4 USB 3.2 GenII x 2
USB 2.0 x 2
- 5 Line-out
- 6 Micro-in
- 7 Power on/off

Modular Industrial Panel PC WLPM Series Selection Guide

Model Name	WLPM-900					WLPM-V00		
	924	922	919	917	915	V24	V22	V15
CPU	Intel® Coffee Lake - S Core i3/i5/i7/i9					AMD Ryzen™ Embedded V1000		
Panel Size	23.8"	21.5"	19"	17"	15"	23.8"	21.5"	15"
Touch Panel	Full Flat Resis. Touch / Optional P-Cap Touch							
Storage	1 x 2.5" SATA SSD 1 x M.2 M.Key 2280 PCIe4 for NVMe SSD					1 x 2.5" SATA SSD 1 x M.2 M.Key 2242/2260/2280 PCIe2 and SATA for SSD		
Expansion slot	1 x M.2 Key E 2230 w/ PCIe1, USB2.0 and CNVI for Wireless 1 x mini-PCIe for Full/Half w/ PCIe1 and USB2.0 1 x PCIe16 (25W max.)					1 x M.2 Key E 2230 w/ PCIe1 Share USB2.0 for Wireless 1 x mini-PCIe for Full/Half w/ PCIe1 1 x PCIe8 (25W max.)		
Major Options	1. Stainless or Silver Front Bezel; 2. TPM 2.0 ; 3. Cable Tie Bracket; 4. USB 2.0 X 2; 5. PCIe Riser Card (X8); 6. RS232 x 3; 7. 2nd HDD for RAID 0,1 *M.2 NVMe SSD; *mPCIe AI Core X (VPU *1, Intel Movidius Myriad x 2485)							



15"



17"



19"



21.5"



23.8"

Modular Panel Mount Touch Panel PC I - Core Series						Modular Panel Mount Touch Panel PC II - AMD Series			
Product Name	WLPM- 900					WLPM-V00			
	924	922	919	917	915	V24	V22	V15	
Main System									
CPU	Intel® Coffee Lake- S Core i					AMD Ryzen™ Embedded V1000			
Memory	up to 32GB					up to 32GB			
Chipset	SoC					SoC			
OS support	Win10					Win 10			
Display & Touch Panel									
Size	23.8"	21.5"	19"	17"	15"	23.8"	21.5"	15"	
Resolution	1920 x 1080 (FHD)		1280 x 1024 (SXGA)		1024 x 768 (XGA)	1920 x 1080 (FHD)		1024 x 768 (XGA)	
Color Numbers	16.7M			16.2M		16.7M		16.2M	
View Angle (H/V)	178/178	170/160	170/160	170/160	160/160	178/178	170/160	160/160	
Contrast	3000:1	1000:1	1000:1	1000:1	800:1	3000:1	1000:1	800:1	
Brightness (nits)	250	250	350	350	450	250	250	450	
Touch Panel	Full Flat Resis. Touch / Optional P-Cap Touch					Full Flat Resis. Touch / Optional P-Cap Touch			
IO Configuration									
USB	4 x USB 3.1					2 x USB 3.2 Gen II, 2 x USB 2.0			
COM	2 x RS232, 1 x RS232/RS422/RS485					2 x RS232/RS422/RS485			
LAN	2 x RJ-45					2 x RJ-45			
Video Port	Line-out, and Mic-in / 3 x DP1.2					Line-out, and Mic-in / 3 x DP1.2a			
Storage & Expansion									
Storage	1 x 2.5" SATA SSD 1 x M.2 M.Key 2280 PCIe4 for NVMe SSD					1 x 2.5" SATA SSD 1 x M.2 M.Key 2242/2260/2280 PCIe2 and SATA for SSD			
Expansion slot	1 x M.2 Key E 2230 w/ PCIe1, USB2.0 and CNVI for Wireless 1 x mini-PCIe for Full/Half w/ PCIe1 and USB2.0 1 x PCIe16 (25W max.)					1 x M.2 Key E 2230 w/ PCIe1, share USB2.0 for Wireless 1 x mini-PCIe for Full/Half w/ PCIe1 1 x PCIe8 (25W max.)			
Mechanical & Environmental									
Dimension mm (L x W x D)	653.7x412x121.4	584.3x364.6x121.4	495.5x384.7x131.4	426.2x358.6x125	398x330x123.9	653.7x412x121.4	584.3x364.6x121.4	398x330x123.9	
Operating Temp.	0~50°C					0~50°C			
IP rating	IP66 at front, IK05					IP66 at front, IK05			
Cooling	Fanless					Fanless			
Power									
Power Input	DC19V~28V					DC19V~28V			
Power Adapter	150W (PSU with PSE)					150W (PSU with PSE)			
Certification									
Certification	CE / FCC / VCCI Class B, Canada ICES-003					CE / FCC / VCCI Class B, Canada ICES-003			
Options & Customization									
Major Options	1. Stainless Front Bezel 2. Silver Front Bezel 3. TPM 2.0 Module 4. Chassis Type Housing 5. Openframe Housing		6. Cable Tie Bracket 7. USB 2.0 x 2 (By Cable) 8. PCIe Riser Card (x16) 9. RS232 x 3 (By Cable) 10. Wireless and BT kit (2nt)			1. Stainless Front Bezel 2. Silver Front Bezel 3. TPM 2.0 Module 4. Chassis Type Housing 5. Openframe Housing		6. Cable Tie Bracket 7. USB 2.0 x 2 (By Cable) 8. PCIe Riser Card (x8) 9. RS232 x 3 (By Cable) 10. Wireless and BT kit (2nt)	
Customization	* M.2 NVMe SSD * mPCIe AI Core X, Core XP4, Core XP8 * 2nd HDD for RAID 0,1					1. 2.5" HDD 2. 2nd 2.5" SSD / HDD for RAID 0,1			

All product specifications are subject to change without notice



About Wincomm Corp.

Wincomm is one of Taiwan's leading manufacturer of industrial computer and embedded computer products. Wincomm designs and develops all in one panel PC, large size all in onedigital signage system, rugged box PC and embedded software products for a broad range of industries and applications. Wincomm aims to provide hardware and software integrated solutions for the most variant environments such as industrial automation/ human machine interface control, digital signage / infotainment Kiosk, and medical computing.

Application



Factory Automation



Building Control



Self-service Kiosks

Headquarters

3F, No. 14, Prosperity Road II, Science-Based Industrial Park, Hsinchu, Taiwan, R.O.C.

Tel +886 3 578 0000

Fax +886 3 577 0631

sales_support@wincomm.com.tw

Wincomm USA

2138 Ringwood Avenue, San Jose, CA 95131 USA

sales_support@wincomm.com.tw

Wincomm Japan

#206, 4-16-17, Namiki, Kawaguchi-City, Saitama, 332-0034, Japan

sales_support@wincomm.com.tw



Wincomm Corp. through the IAS of the ARES INTERNATIONAL CERTIFICATION CO., LTD. ISO 14001:2015 certification



IoT Solutions Alliance

