

BALOGH



189, Rue d'Aubervilliers C.P. 97 75886 PARIS Cedex 18 FRANCE
Tél : 33 (0)1.44.65.65.00 Fax : 33 (0)1.44.65.65.10
<http://www.balogh-group.com>

IDENTIFICATION SYSTEMS

R/W head

ERO 100

DESCRIPTION

The **ERO 100** is a R/W head (transceiver): used in conjunction with an appropriate Balogh control board, it enables to read/write data to/from electronic tags type OMA (MEGA. ID range) and OF/OFR or GIE (MID .ID range).

It features an M12 plug for a quick connection to the control board.



DATA FOR ASSEMBLY

Assembly via two through-holes:

two M4 screws required:
(body length \geq 35 mm)

Connection:

- Through the M12 male connector;
Round-shielded **metallic** cable connector;
Clearance for the cable connector: ca. 50 mm.
- Shielded cable; maximum length: 300 m.

View of the rear side.

Keying at 10:00 allows you to plug some right-angled cable connectors (check to make sure that yours are OK):



Pin nr	Assignment
1	+Ucc supply
2	output from ERO
3	input into ERO
4	0 V supply

C H A R A C T E R I S T I C S
A S S E M B L Y R E C O M M E N D A T I O N S

		OMA / GIE										Unit
		711		731		831/ 931		851		861		
Parameters		MIN	AVG	MIN	AVG	MIN	AVG	MIN	AVG	MIN	AVG	
S_n "nominal" range		55		45		75		100		90		mm
S_r recommended range		0.4 x S_n										mm
LS_r transmission zone length @ S_r		100 ¹⁾		70 ²⁾		110 ³⁾		150 ⁴⁾		90 ⁵⁾		mm
		OF / OFR										
		71	73	83/ 93	85 or 56	861						
S_n "nominal" range		60		45		68		80		60		mm
S_r recommended range		0.4 x S_n										mm
LS_r transmission zone length @ S_r		105 ⁶⁾		70 ⁷⁾		100 ⁸⁾		160 ⁹⁾		120 ¹⁰⁾		mm

Test conditions: maximum allowed offsets for LS_r to have the published value guaranteed:

- Angular: $\pm 20^\circ$ for any tag
- Lateral (mm):

1) ± 15	2) ± 13.5	3) ± 15	4) ± 18	5) ± 15
6) ± 20	7) ± 13.5	8) ± 15	9) ± 20	10) ± 12

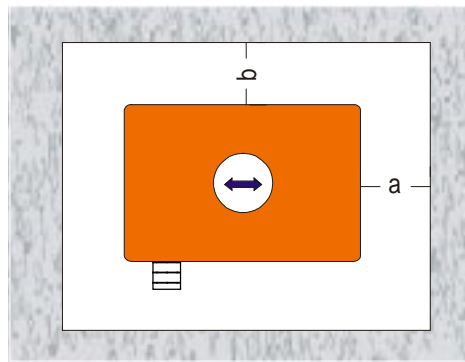
all the data are valid only if the tag is in non metallic environment.

Parameters		MIN	AVG	MAX	Unit	
Electronics	Ambient temperature	- 25		+70		°C
	supply voltage (ripple included)	21	24	29	V	
	Supply current @ 24 V			150	mA	
	Protection against reverse voltage			yes	-	
	Transmission frequency			1.5	MHz	

Packag^{ing}	Casing	Rilsan	-
	Weight	550	g
	Protection rating	IP 65	-

The ERO is not to be mounted directly in a recessed metal cavity.
 A 30-mm metal-free clearance surrounding the head is required:

$a = b = 30 \text{ mm}$



Do not install another head within a radius of 1,200 mm around an ERO 100 so that they do not interfere:

